

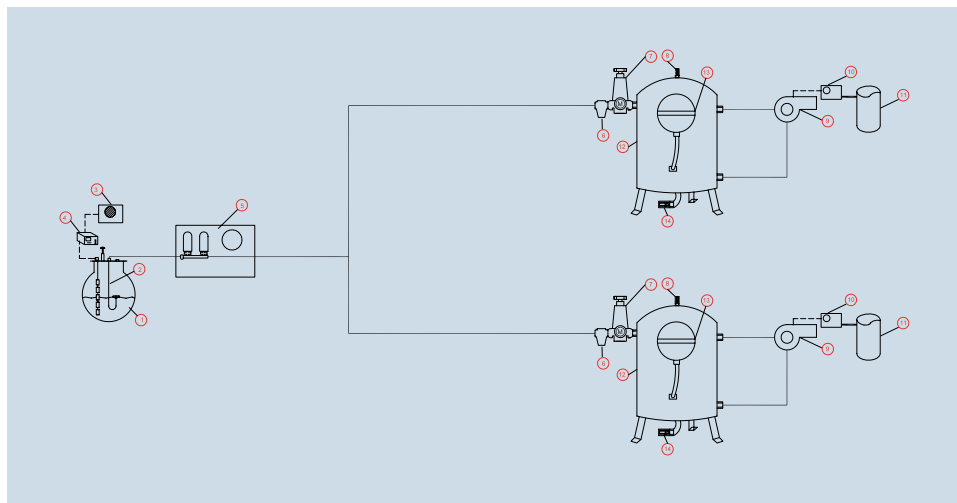
# INPRO OIL BURNER INLET ASSEMBLY



- 1) Main storage tank
- 2) Intake pipe
- 3) Over ll prevention kit
- 4) Remote level gauge EDM 40
- 5) Pressure Pump Inpro GP
- 6) Filter
- 7) Pressure reduction valve (using pressure gauge)
- 8) Air vent
- 9) Modulating burner
- 10) Adjustable exhaust temperature limiter IT-17
- 11) Burner exhaust pipe
- 12) Reservoir
- 13) Membrane expansion vessel
- 14) System drain

Compact set for burner gas-oil inlet mounted on aluminium manifold. Endowed with all elements necessary for inlet and return to gas-oil burner.

MODEL	INPRO-OIL BURNER INLET assembly		INPRO-OIL BURNER INLET STABILIZER assembly, for Modulating Burners		
	20 l/h	200 l/h	200 l/h	500 l/h	1500 l/h
Filter	0,1 mm 3/8"	0,1 mm 1/2"	0,1 mm 1/2" iG	0,1 mm 3/4" iG	0,1 mm 1" iG
Pressure reducing valve	20 l/h adjustable with manometer	200 l/h adjustable with manometer	200 l/h adjustable with manometer	500 l/h adjustable with manometer	1500 l/h adjustable with manometer
Burner intake	10 mm	1/2" iG	3/4" iG	3/4" iG	3/4" iG
Burner return	3/8" iG	1/2" iG	3/4" iG	3/4" iG	3/4" iG
Circulation and accumulation reservoir	-	-	50 l	50 l	50 l
Expansion vessel for heating oil	-	-	5 l	5 l	5 l
Emptying connection	-	-	1/2"	1/2"	1/2"
Air vent	-	-	3/8"	3/8"	3/8"
Max. work pressure	4 bar	4 bar	4 bar	4 bar	4 bar
Max inlet pressure	6 bar	6 bar	6 bar	6 bar	6 bar
Vertical / horizontal attachment support	-	Yes	No	No	No



## PRESSURE REDUCING VALVES

FLOW l/h	MAXIMUM INLET PRESSURE	REGULATION	CONNECTION	ACCESSORIES
20	6 kg/cm <sup>2</sup>	Fixed outlet 0.1 kg/cm <sup>2</sup>	For 8 mm tube	
20	6 kg/cm <sup>2</sup>	Fixed outlet 0.1 kg/cm <sup>2</sup>	For 10 mm tube	
200	10 kg/cm <sup>2</sup>	Adjustable 0.2-3.5 kg/cm <sup>2</sup>	Female 1/4"	With manometer
500	10 kg/cm <sup>2</sup>	Ajustable 0.2-3.5 kg/cm <sup>2</sup>	Female 3/8"	With manometer
1.500	10 kg/cm <sup>2</sup>	Adjustable 0.2-3.5 kg/cm <sup>2</sup>	Female 1/2"	With manometer
2.000	10 kg/cm <sup>2</sup>	Adjustable 0.2-3.5 kg/cm <sup>2</sup>	Female 3/4"	With manometer
3.000	10 kg/cm <sup>2</sup>	Adjustable 0.2-3.5 kg/cm <sup>2</sup>	Female 1"	With manometer



C/Invierno, 4-6 28500  
Arganda del Rey, Madrid (Spain)  
Telf.: (+34) 918 719 294  
info@inprord.com  
www.inprord.com



63457 Hanau - Voltastr, 10  
Deutschland (Germany)  
Telf.: (+49) 06181/9587-0  
info@simka.de  
www.simka.de