



# INPRO IOT - GATE WAY MULTICOM

## GATE WAY MULTICOM

Code: 06110000200001



**Inpro IoT Multicom** is a Gateway with wireless connectivity through GSM/GPRS, NB-IoT/LTE, and LoRa (optional), already preconfigured for remote facilities through to the Web/IoS/Android **Inpro Cloud platform**.

It allows the transmission of digital and analog signals to this platform, generating early alerts by email and App, as well as local action from the Inprocloud platform through its digital outputs.

### MAIN FEATURES:

- LTE Cat M1/Cat NB1/E EGPRS / GSM communications
- Optional LoRa long-range communication
- Bluetooth BLE 5.0
- **2 digital inputs** configurable to **24, 12 and 5 Vdc standards**.
- **1 digital input AC 230 Vac**
- **2 analog inputs** 4-20 mA / 0-10 Vdc
- **2 digital outputs**
- Power port to sensors in 5 and 12 V
- GPS geolocation
- Optional power supply via photovoltaic plate
- Configurable communication and operational parameters

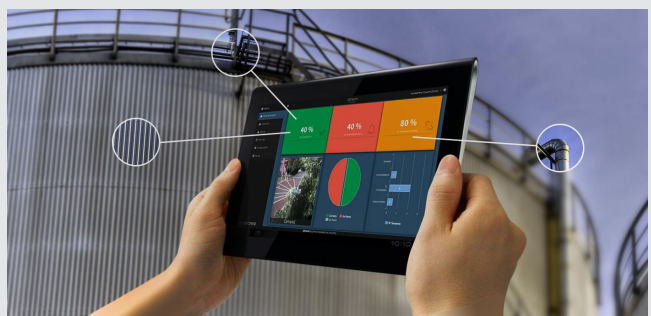
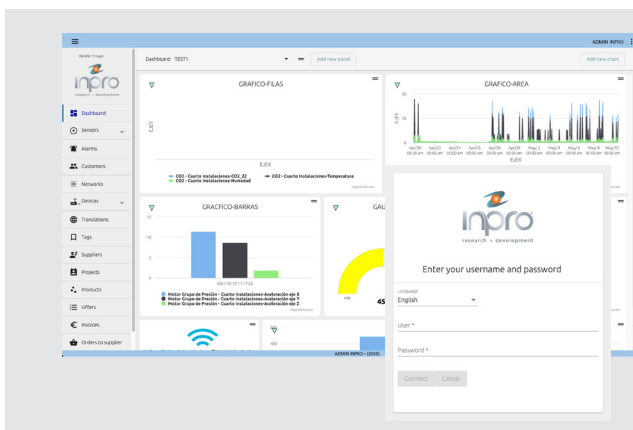
## COMMUNICATION TO INPROCLOUD WEB PLATFORM



Access to readings and cloud sensory logs via:

- **Web:** Monitoring, control and setting.
- **App:** iOS and Android (read-only).

	CODE
5 YEARS OF ACCESS TO INPROCLOUD	06110000200004
SIM CARD WITH 5 YEARS OF DATA USAGE (LIMITED TO 500 MB. IN TOTAL)	25000000000010



## INPRO IOT MULTICOM SPECIFICATIONS CODE: 06110000300000

### COMMUNICATIONS

Frequency Band	LTE Cat M1/Cat NB1/EGPRS
EGPRS	850/900/1800/1900 MHz
Cat M1/Cat NB1	B1/B2/B3/B4/B5/B8/B12/B13/B17/B18/B19/B20/B25*/B26*/B28 B39 (Cat M1 only)
ISM Band	LoRa
LoRa	433, 868 the 915 MHz
Protocol	MQTT
Location	GNSS -(GPS, Galileo, Glonass, Beidou)
Antenna	Internal. Optional: SMA connector for external antenna.

### BLE COMMUNICATIONS (BLUETOOTH LOW ENERGY)

BLE version	5.0
Frequency	2440 Mhz

### COMPONENTS

Digital Inputs	2 digital inputs: alarm / pulser. Configurable for 24V (industrial), 12V and 5V. 1 AC detector input 230 Vac
Analog Inputs	2 analog inputs 4-20 mA / 0-10 Vdc,
Digital Outputs	1 contact-type digital output with inductive load switching capability up to 3A and 250 Vac and 10A and 250 VAC for resistive loads. 1 digital contact-type output with control signal switching capability up to 100 mA and 60 Vac.
Sensors	Accelerometer, Lighting Temperature, Humidity Pressure, Magnetic
Communication interface	I2C
Sensors Power supply	+5 Vdc maximum current 350 mA      +12 Vdc maximum current 150 mA
Power	90 – 260 Vac with backup battery. Power options of the equipment: External power supply: 12 VDC - Connection to photovoltaic power source

### OPERATIONAL, MECHANICAL AND ENVIRONMENTAL

Dimensions	145mm(W) x 105mm(L) x 45mm (H) ±1mm
Weight	110 g
Enclosure material	Abs plastic
Working temperature	-30 degrees Celsius to 85 degrees Celsius
Temp. storage	-40 degrees Celsius to 70 degrees Celsius
Moisture	0% - 100%
Degree of protection	IP-65