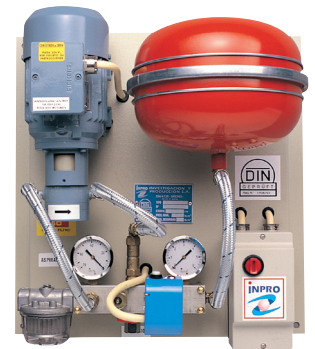


# OIL TRANSFER PRESSURE UNITS

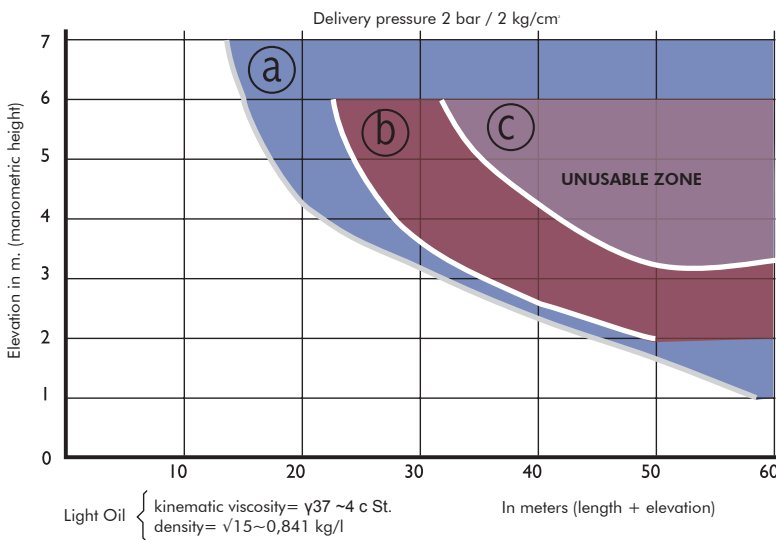
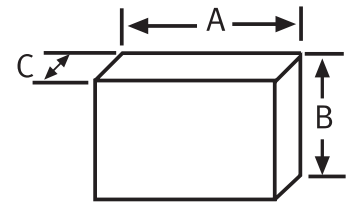
## GP N - 1 PUMP

MODEL		GP-70 N	GP-130 N	GP-200 N	GP-300 N	GP-500 N	GP-800 N	GP-1.500 N
FLOW	I/h	70	130	200	300	500	800	1.500
CONNECTION TO THE HYDRAULIC CIRCUIT (Ø THREAD / Ø MM)	SUCTION	1/2"	1/2"	1/2"	3/4"	3/4"	1"	1"
	DRIVE	3/8"	3/8"	3/8"	1/2"	1/2"	1/2"	3/4"
POWER SUPPLY	VOLTS	230/400 tri-phase*	230/400 tri-phase*	230/400 tri-phase*	230/400 tri-phase*	230/400 tri-phase	230/400 tri-phase	230/400 tri-phase
CONSUMPTION	AMPS	0,8 / 0,5	1,2 / 0,8	1,2 / 0,8	1,8 / 1,2	1,8 / 1,2	2,6 / 1,8	3,7 / 2,6
MOTOR POWER	C.V.	1/4	1/3	1/3	1/2	1/2	3/4	1½
	KW	0,18	0,25	0,25	0,37	0,37	0,55	1,1
MAX. PRESSURE	KG/CM <sup>2</sup>	3,5	3,5	3,5	4	4	4	4
SAFETY VALVE OPENS AT:	Kg/cm <sup>2</sup>	4	4	4	4,5	4,5	4,5	4,5
MOTOR PROTECTION	IP	55	55	55	55	55	55	55

- (\*) There is a 230 single-phase version (W)  
 - Sound level: 58 db (A)



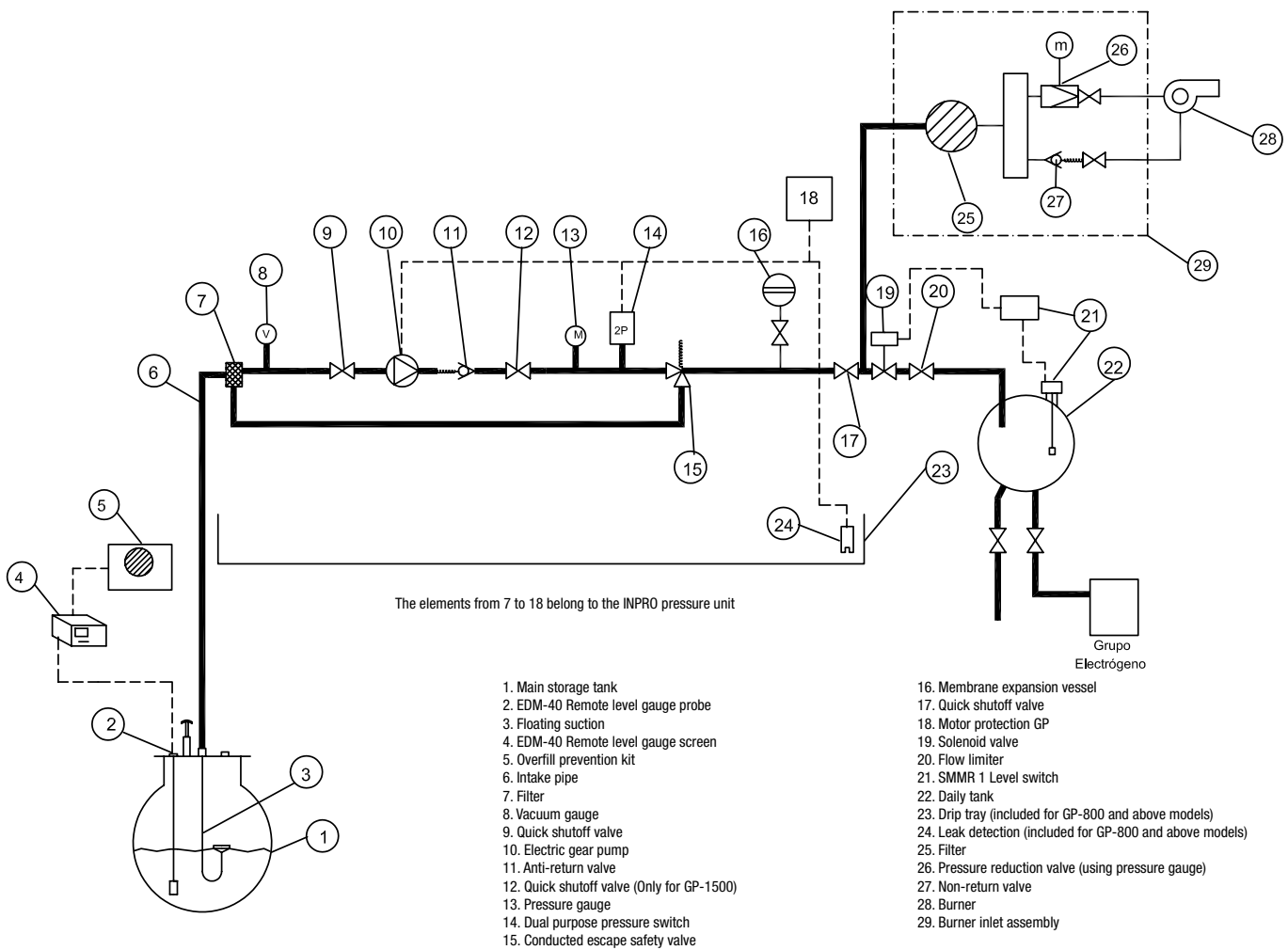
MODEL	GP-70 N	GP-130 N	GP-200 N	GP-300 N	GP-500 N	GP-800 N	GP-1.500 N
A	460	460	460	600	600	620	1.170
B	510	510	610	700	700	720	970
C	300	300	300	350	350	400	550
Approx. Weight (kg)	18,2	21,8	21,8	31,2	33,6	36	89



- Unusable zone
- (a) Pressure Unit GP-30
  - (b) Pressure Unit GP-70, GP-130 y GP-200
  - (c) Pressure Unit GP-300, GP-500, GP-800 y GP-1.500



INVESTIGACIÓN Y PRODUCCIÓN S.L.



### Accessories and adaptations

- |  | Art. Nr.       |
|--|----------------|
| • Free voltage relay output to control from centralised Building Management System, in kit 3, 4 or 6 signals (2-thermal, motors 1 or 2 ON, low pressure and Leak safety ON). | 2100000000---  |
| • GSM alarm system by SMS messages, or connection to modem.  | 2800000000000  |
| • Adaptation of Pressure Group for high pressure, working conditions of up to 6 Kg/cm <sup>2</sup>   | 21000000001300 |
| • Leak collector trays with infrared detectors (standard in GP-800 and GP-1500).   | 2309000000---- |
| • Modifications to adapt to specifically regulated environments with tropicalised equipment or ATEX.   |                |
| • Solenoid valves with flow limiters, to automate filling in supply tanks for electrical generators.   | 2303000005---- |
| • Soundproof sheet cabinets with UNE-25 poly-pyramid foam and lock. Manufactured with no back and made-to-measure for each Pressure Group model.                             | 2102000000---- |
| • Assembly of Pressure Groups in IP-55 cabinets for outdoor installation with exterior suction and drive pipe couplings, electric connection presses and ventilation grills. |                |
| • Line pressure switch to signal low pressure.   | 22030000002201 |
| • Power supply failure safety system (timer deferred low pressure stop.)   | 21000000002300 |
| • Burner inlet assembly  | 2301000000---  |
| • Modulating burner inlet assembly   | 23010000001--- |



Investigación y Producción S.L.  
 Zweigniederlassung Deutschland  
 63457 Hanau - Voltastraß, 10  
 Alemania  
 Tel.: (+49) 06181/9587-0  
 Fax: (+49) 06181/958723  
 info@simka.de - www.simka.de



C/Invierno, 4-6  
 Pol. Ind. "El Malvar"  
 28500 Arganda del Rey  
 Madrid  
 Telf.: (+34) 918 719 294  
 Fax: (+34) 918 719 256  
 info@inprosa.net - www.inprosa.net