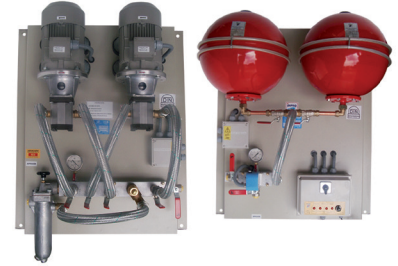


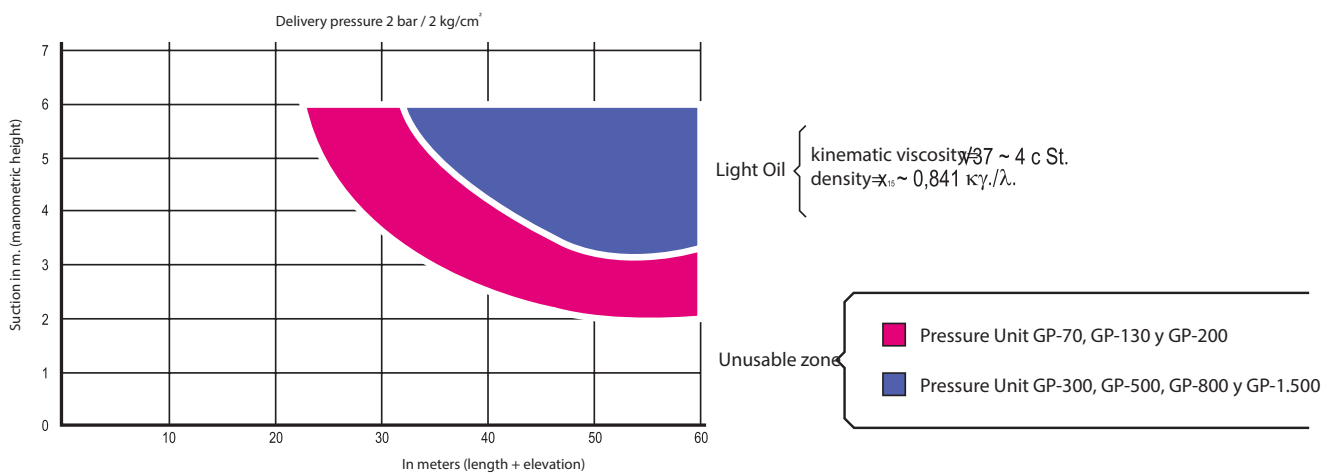
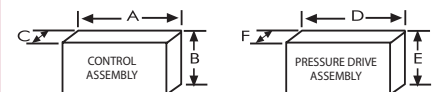
OIL TRANSFER PRESSURE UNITS

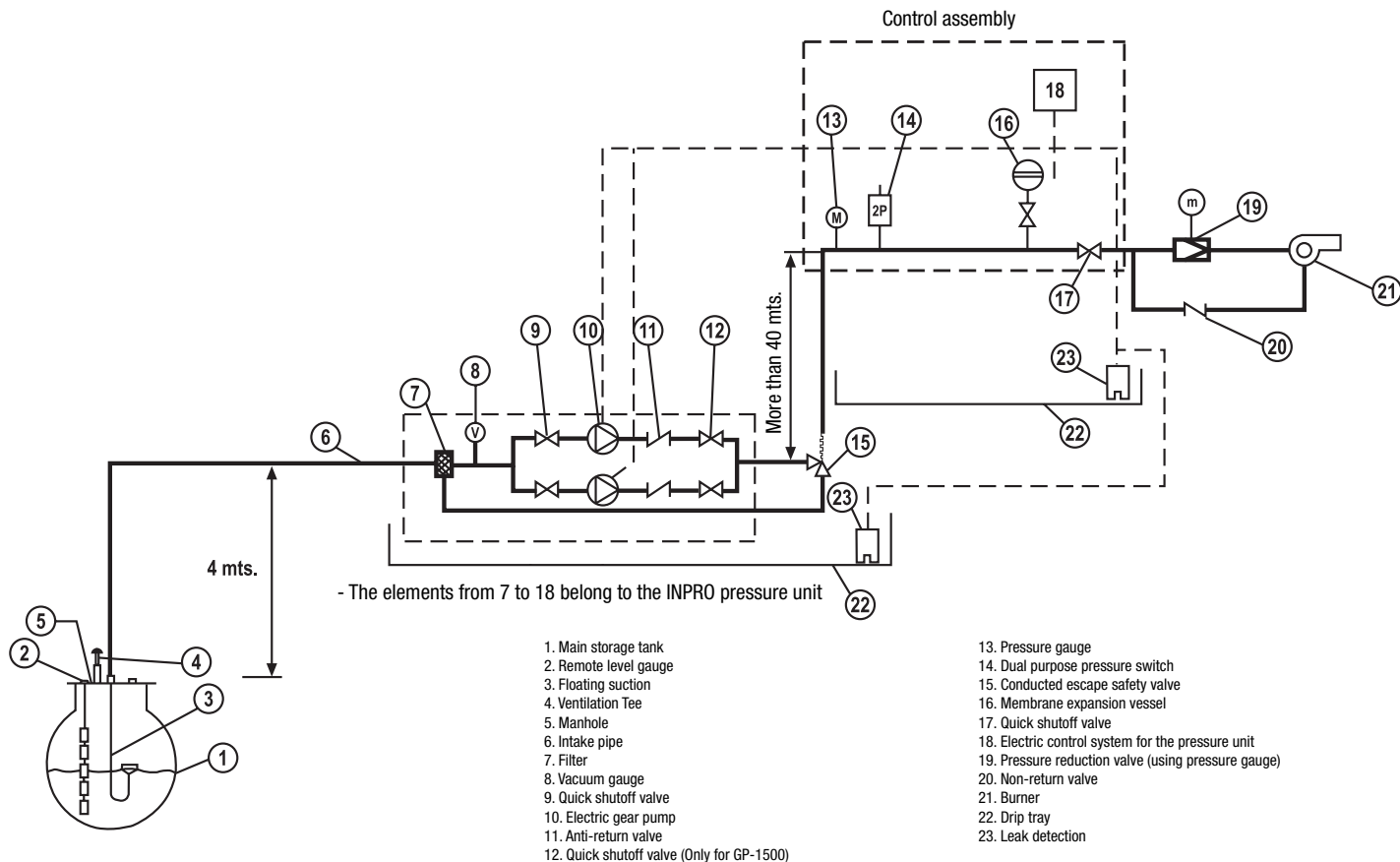
GP M - TWO PARTS HIGH PRESSURE SYSTEM

MODEL		GP-70 N/GE	GP-130 N/GE	GP-200 N/GE	GP-300 N/GE	GP-500 N/GE	GP-800 N/GE	GP-1.500 N/GE
FLOW	I/h	70	130	200	300	500	800	1.500
CONNECTION TO THE HYDRAULIC CIRCUIT (Ø THREAD / Ø MM)	SUCTION	1/2" F	1/2" F	1/2" F	3/4" F	3/4" F	1" F	1" F
	DRIVE	3/8" F	3/8" F	3/8" F	1/2" F	1/2" F	1/2" F	3/4" F
POWER SUPPLY	VOLTS	230/400 tri-phase*	230/400 tri-phase*	230/400 tri-phase*	230/400 tri-phase*	230/400 tri-phase	230/400 tri-phase	230/400 tri-phase
MOTOR POWER	C.V.	1/4	1/3	1/3	1/2	1/2	3/4	1½
	KW	0,18	0,25	0,25	0,37	0,37	0,55	1,1
MAX. PRESSURE	Kg/cm ²	3,5	3,5	3,5	4	4	4	4
SAFETY VALVE OPENS AT:	Kg/cm ²	4	4	4	4,5	4,5	4,5	4,5
MOTOR PROTECTION	IP	55	55	55	55	55	55	55



MODEL	GP-70		GP-130		GP-200		GP-300		GP-500		GP-800		GP-1500	
	MM N	MM GE	MM N	MM GE	MM N	MM GE	MM N	MM GE	MM N	MM GE	MM N	MM GE	MM N	MM GE
A	460	460	460	460	460	460	800	800	800	800	620	620	1.170	1.170
B	510	510	510	510	510	510	720	720	720	720	720	720	970	970
C	300	300	300	300	300	300	370	370	370	370	400	400	550	550
D	450	450	450	450	450	450	600	600	600	600	620	620	1.170	1.170
E	470	470	470	470	470	470	500	500	500	500	530	530	900	900
F	280	280	280	280	280	280	350	350	350	350	400	400	530	530
Weight D,E,F	12	13	12	13	12	13	17	18	17	18	17	18	44	45
Weight A,B,C	13	22	16	24	18	26	20	31	22	33	27	58	60	80





Accessories and adaptations

- Free voltage relay output to control from centralised Building Management System, in kit 3, 4 or 6 signals (2-thermal, motors 1 or 2 ON, low pressure and Leak safety ON).
- GSM alarm system by SMS messages, or connection to modem.
- Adaptation of Pressure Group for high pressure, working conditions of up to 6 Kg/cm²
- Leak collector trays with infrared detectors (standard in GP-800 and GP-1500).
- Modifications to adapt to specifically regulated environments with tropicalised equipment or ATEX.
- Solenoid valves with flow limiters, to automate filling in supply tanks for electrical generators.
- Soundproof sheet cabinets with UNE-25 poly-pyramid foam and lock. Manufactured with no back and made-to-measure for each Pressure Group model.
- Assembly of Pressure Groups in IP-55 cabinets for outdoor installation with exterior suction and drive pipe couplings, electric connection presses and ventilation grills.
- Line pressure switch to signal low pressure.
- Power supply failure safety system (timer deferred low pressure stop.)
- Burner inlet assembly
- Modulating burner inlet assembly

Art. Nr.

21000000000---
 28000000000000
 21000000001300
 2309000000----
 2303000005----
 2102000000----
 22030000002201
 21000000002300
 230100000000---
 230100000001---



Investigación y Producción S.L.
 Zweigniederlassung Deutschland
 63457 Hanau - Voltastraße, 10
 Deutschland / Germany
 Tel.: (+49) 06181/9587-0
 Fax: (+49) 06181/958723
 info@simka.de - www.simka.de



C/Invierno, 4-6
 Pol. Ind. "El Malvar"
 28500 Arganda del Rey
 Madrid
 Telf.: (+34) 918 719 294
 Fax: (+34) 918 719 256
 info@inprosa.net - www.inprosa.net