

OIL TRANSFER PRESSURE UNITS

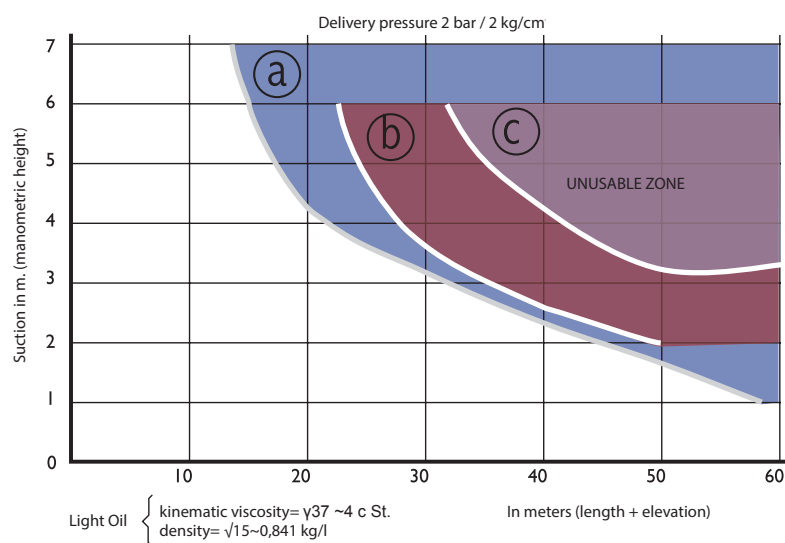
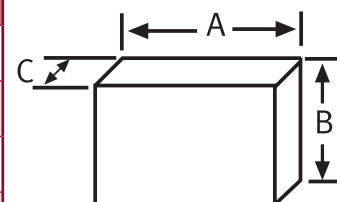
GP GE - 2 PUMPS/TWIN SYSTEM

MODEL		GP-70 GE	GP-130 GE	GP-200 GE	GP-300 GE	GP-500 GE	GP-800 GE	GP-1.500 GE
FLOW	l/h	70	130	200	300	500	800	1.500
CONNECTION TO THE HYDRAULIC CIRCUIT (Ø THREAD / Ø MM)	SUCTION	1/2" F	1/2" F	1/2" F	3/4" F	3/4" F	1" F	1" F
	DRIVE	3/8" F	3/8" F	3/8" F	1/2" F	1/2" F	1/2" F	3/4" F
POWER SUPPLY	VOLTS	230/400 tri-phase*	230/400 tri-phase*	230/400 tri-phase*	230/400 tri-phase*	230/400 tri-phase	230/400 tri-phase	230/400 tri-phase
MOTOR POWER	C.V.	1/4	1/3	1/3	1/3	1/2	3/4	1½
	KW	0,18	0,25	0,25	0,25	0,37	0,55	1,1
MAX. PRESSURE	Kg/cm ²	3,5	3,5	3,5	4	4	6	6
SAFETY VALVE OPENS AT:	Kg/cm ²	4	4	4	4,5	4,5	6,5	6,5
MOTOR PROTECTION	IP	55	55	55	55	55	55	55



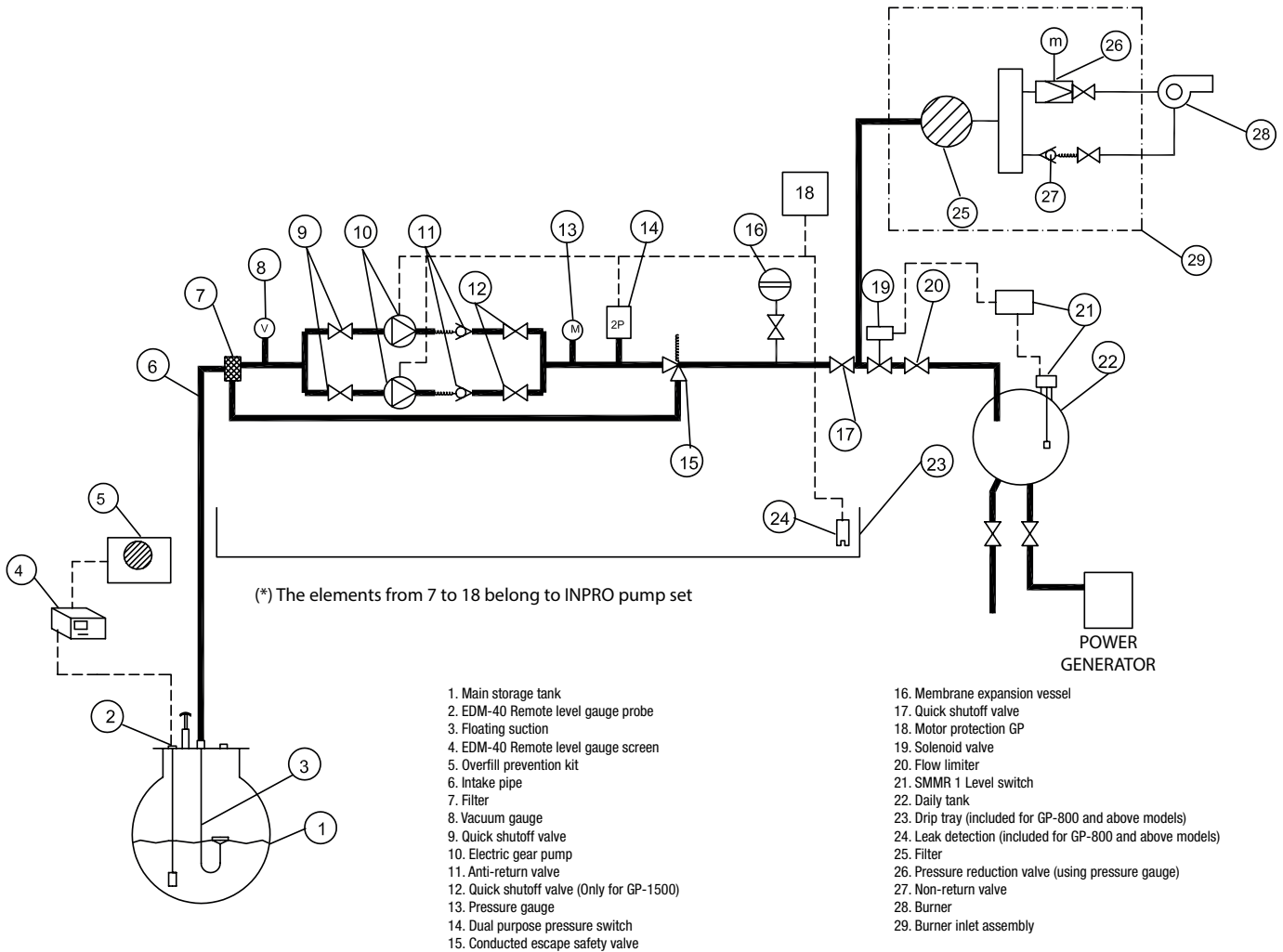
- (*) There is a 230 single-phase version (W)
- Sound level: 58 db (A)

MODEL	GP-70 GE	GP-130 GE	GP-200 GE	GP-300 GE	GP-500 GE	GP-800 GE	GP-1.500 GE
A (cm)	700	700	700	800	800	890	1.455
B (cm)	530	530	630	720	720	750	970
C (cm)	300	300	330	370	370	400	550
Approx. Weight (kg)	31,4	34,4	35,8	43,4	53	89	135



Unusable zone

- (a) Pressure Unit GP-30
- (b) Pressure Unit GP-70, GP-130 y GP-200
- (c) Pressure Unit GP-300, GP-500, GP-800 y GP-1.500



Accessories and adaptations

- | | Art. Nr. |
|--|-----------------|
| • Free voltage relay output to control from centralised Building Management System, in kit 6 signals (2-thermal, motors 1 or 2 ON, low pressure and Leak safety ON). Standard in GP 800 and GP 1500. | 21000000000--- |
| • GSM alarm system by SMS messages, or connection to modem. | 28000000000000 |
| • Adaptation of Pressure Group for high pressure, working conditions of up to 6 Kg/cm ² | 21000000001300 |
| • Leak collector trays with infrared detectors (standard in GP-800 and GP-1500). | 2309000000---- |
| • Modifications to adapt to specifically regulated environments with tropicalised equipment or ATEX. | |
| • Solenoid valves with flow limiters, to automate filling in supply tanks for electrical generators. | 2303000005---- |
| • Soundproof sheet cabinets with UNE-25 poly-pyramid foam and lock. Manufactured with no back and made-to-measure for each Pressure Group model. | 2102000000---- |
| • Assembly of Pressure Groups in IP-55 cabinets for outdoor installation with exterior suction and drive pipe couplings, electric connection presses and ventilation grills. | |
| • Line pressure switch to signal low pressure. | 22030000002201 |
| • Power supply failure safety system (timer deferred low pressure stop.) | 21000000002300 |
| • Burner inlet assembly | 230100000000--- |
| • Modulating burner inlet assembly | 230100000001--- |



Investigación y Producción S.L.
 Zweigniederlassung Deutschland
 63457 Hanau - Voltastraße, 10
 Deutschland / Germany
 Tel.: (+49) 06181/9587-0
 Fax: (+49) 06181/958723
 info@simka.de - www.simka.de



C/Invierno, 4-6
 Pol. Ind. "El Malvar"
 28500 Arganda del Rey
 Madrid
 Telf.: (+34) 918 719 294
 Fax: (+34) 918 719 256
 info@inprosa.net - www.inprosa.net