

OIL TRANSFER PRESSURE UNITS

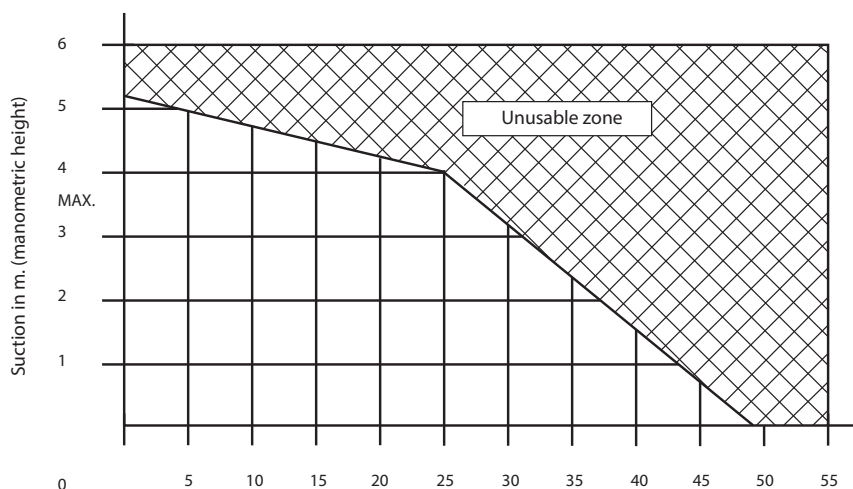
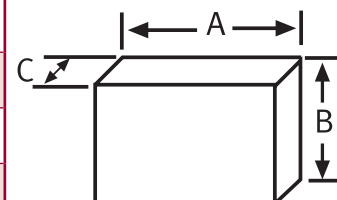
GP N/GE - GC HIGH FLOW SYSTEMS

MODEL		GP-2200 NT GP-2200 GE	GP-3200 NT GP-3200 GE	GP-4200 NT GP-4200 GE	GP-6500 NT GP-6500 GE	GP-8500 NT GP-8500 GE	GP-12000 NT GP-12000 GE
FLOW	I/h	2.200	3.200	4.200	6.500	8.500	12.000
CONNECTION TO THE HYDRAULIC CIRCUIT (Ø THREAD / Ø MM)	SUCTION	1" F	1" 1/2 F	1" 1/2 F	2" F	2" F	2" F
	DRIVE	3/4" F	1" F	1" 1/4 F	1" 1/2 F	1" 1/2 F	2" F
POWER SUPPLY	VOLTIOS	230/400 tri-phase	230/400 tri-phase	230/400 tri-phase	230/400 tri-phase	230/400 tri-phase	230/400 tri-phase
MOTOR POWER	C.V.	2	2	3	4	4	5,5
	KW	1,5	1,5	2,2	3	3	4
MAX. PRESSURE	Kg/cm ²	6	6	6	6	6	6
SAFETY VALVE OPENS AT:	Kg/cm ²	6,5	6,5	6,5	6,5	6,5	6,5
PIPPING SUCT/PRES		1½" / 1"	2" / 1¼"	2½" / 1½"	2½" / 1½"	3" / 2"	3" / 2½"
MOTOR PROTECTION	IP	55	55	55	55	55	55

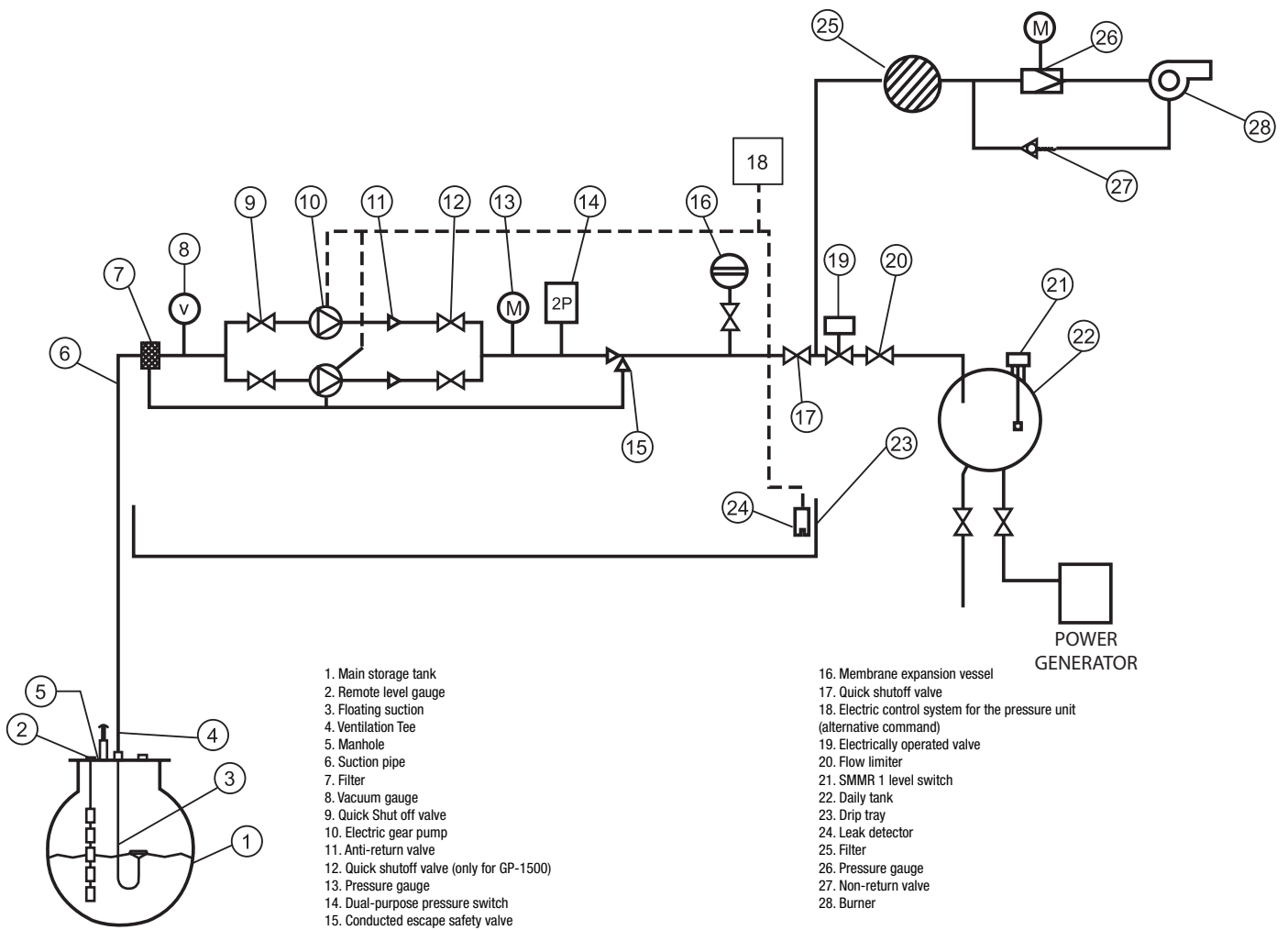


- Sound Level: 60 dB (A)

MODEL	GP-2200 GC	GP-3200 GC	GP-4200 GC	GP-6500 GC	GP-8500 GC	GP-12000 GC
A	1.150	1.150	1.150	1.150	1.150	1.150
B	910	910	910	910	910	910
C	1.610	1.610	1.610	1.610	1.610	1.610
Approx. Weight NT (kg)	99	105	110	120	135	140
Approx. Weight GE (kg)	117	127	136	147	164	171



Light Oil | kinematic viscosity = $\nu_{37} \sim 4$ c St.
density = $\rho_{15} \sim 0,841$ kg/Λ.



Accessories and adaptations

- Free voltage relay output to control from centralised Building Management System, in kit 3, 4 or 6 signals (2-thermal, motors 1 or 2 ON, low pressure and Leak safety ON).
- GSM alarm system by SMS messages, or connection to modem.
- Adaptation of Pressure Group for high pressure, working conditions of up to 6 Kg/cm²
- Leak collector trays with infrared detectors (standard in GP-800 and GP-1500).
- Modifications to adapt to specifically regulated environments with tropicalised equipment or ATEX.
- Solenoid valves with flow limiters, to automate filling in supply tanks for electrical generators.
- Soundproof sheet cabinets with UNE-25 poly-pyramid foam and lock. Manufactured with no back and made-to-measure for each Pressure Group model.
- Burner inlet assembly
- Modulating burner inlet assembly

Art. Nr.

21000000000---
 28000000000000
 21000000001300
 2309000000----
 2303000005----
 2102000000----
 23010000000---
 23010000001---