

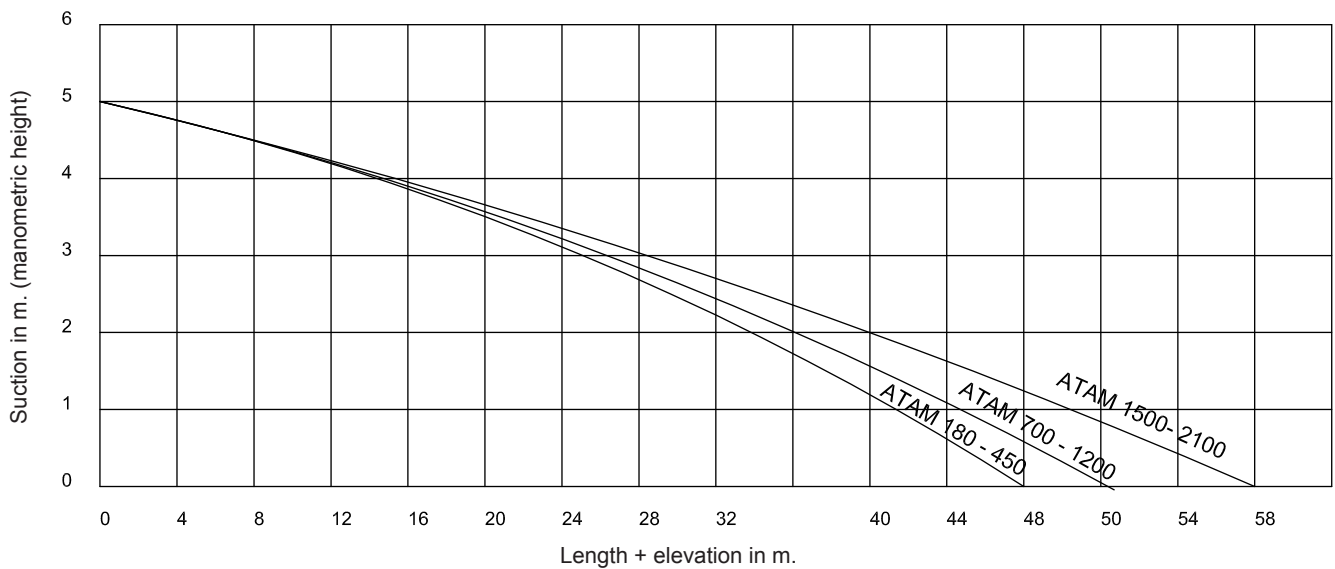
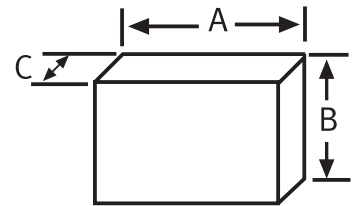
ATAM Diesel Transfer Pressure Set for Power Generation Systems

MODELO ATAM		180 GET	300 GET	450 GET	700 GET	900 GET	1.200 GET	1.500 GET	2.100 GET
FLOW	l/h	180	300	450	700	900	1.200	1.500	2.100
MOTOR POWER	V	400	400	400	400	400	400	400	400
	kW	0,25	0,25	0,25	0,33	0,55	0,55	0,55	1
MOTOR SPEED	r.p.m	1.400	1.400	1.400	1.400	1.400	1.400	1.400	1.400
CONNECTION TO HYDRAULIC CIRCUIT	SUCTION	1/2" F	1/2" F	1/2" F	3/4" F	3/4" F	3/4" F	1" F	1" F
	DRIVE	1/2" F	1/2" F	1/2" F	3/4" F	3/4" F	3/4" F	1" F	1" F
	OVERPRESSURE	1/2" F	1/2" F	1/2" F	3/4" F	3/4" F	3/4" F	1" F	1" F
SECURITY VALVE OPENS AT:	bar	4,5	4,5	4,5	4,5	4,5	4,5	4,5	4,5
SOUND LEVEL	dB (A)	58	58	58	58	58	58	58	58
MOTOR PROTECTION	IP	55	55	55	55	55	55	55	55



- Produced and tested under DIN 12.514-1 standard

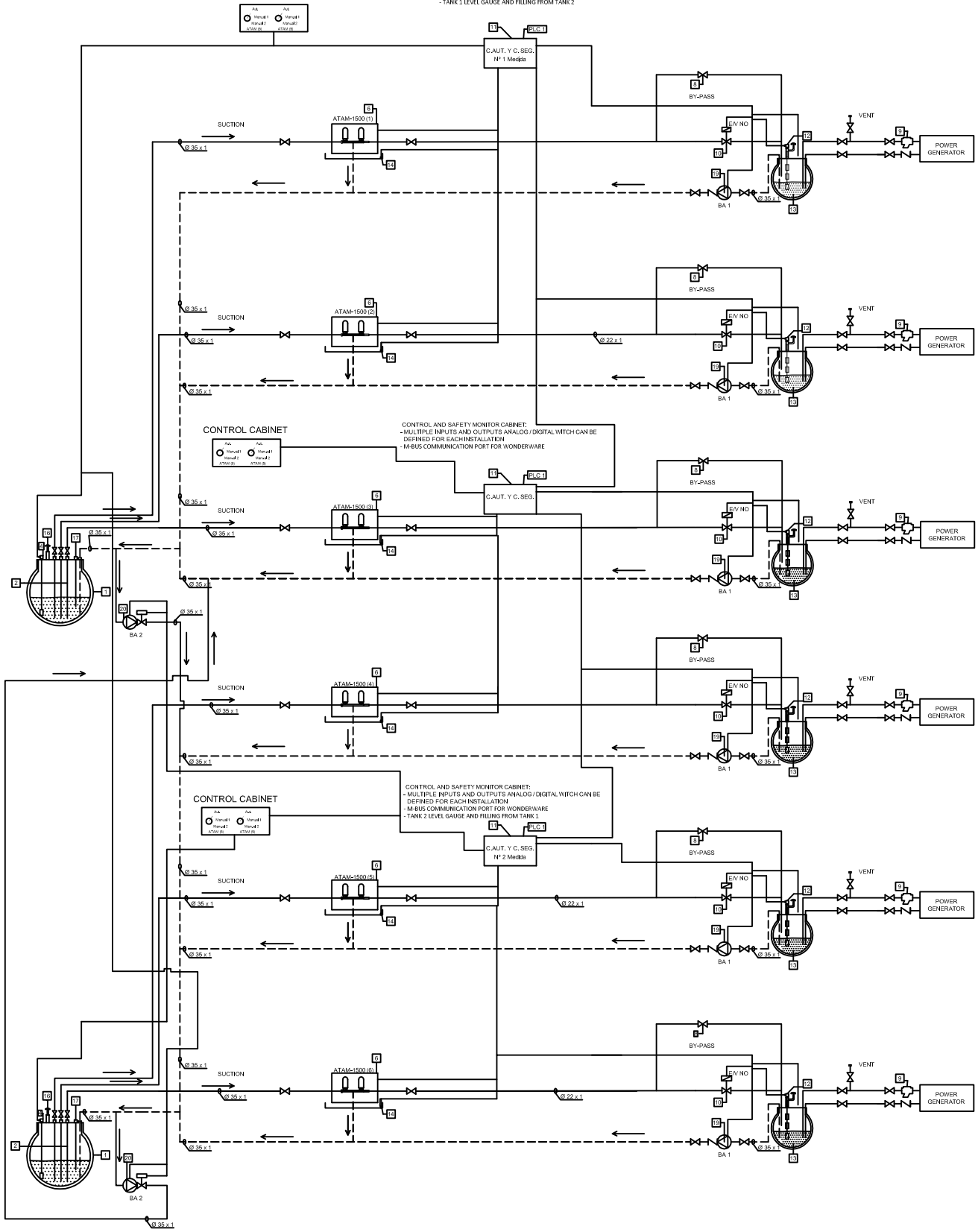
MODEL	ATAM 180 GET	ATAM 300 GET	ATAM 450 GET	ATAM 700 GET	ATAM 900 GET	ATAM 1.200 GET	ATAM 1.500 GET	ATAM 2.100 GET
A	700	700	700	800	890	890	1.115	1.115
B	550	550	550	720	750	750	970	970
C	300	300	300	350	400	400	500	500
WEIGHT APPROX. (kg)	31	34	34	65	80	90	150	160



Example of Transfer to Power Generators

CAG+ CONTROL AND SAFETY MONITOR CABINET FOR MULTIPLE BACKUP POWER GENERATORS

CONTROL AND SAFETY MONITOR CABINET:
 - MULTIPLE INPUTS AND OUTPUTS ANALOG / DIGITAL SWITCH CAN BE DEFINED FOR EACH INSTALLATION
 - M-BUS COMMUNICATION PORT FOR WONDERWARE
 - TANK 1 LEVEL GAUGE AND FILLING FROM TANK 2



DESCRIPTION:

- 1.- MAIN STORAGE TANK.
- 2.- SUCTION PIPE
- 4.- EDM-40 LEVEL PROBE
- 5.- "INPRO" ATAM-500 GET DIESEL TRANSFER SYSTEM PUMP BODY (TROPICALIZATION TREATMENT)
- 8.- BY-PASS VALVES
- 9.- STRAINER 0,05 mm
- 10.- SOLENOID VALVES NO
- 11.- CAG+ CONTROL AND SAFETY MONITOR CABINET (TO WONDERWARE MOD BUS BMS)

- 12.- SMMR-2 SAFETY LEVEL PROBE
 - 13.- DAILY TANK GENSET
 - 14.- INPRO ATAM-500 GET LEAK DETECTION
 - 16.- VENT 1 1/2"
 - 17.- FILLPOINT 3"
 - 18.- FLOW SWITCH FOR VENT 1-1/2"
 - 19.- DRAIN PUMP WITH NON RETURN VALVE
 - 20.- TRANSFER PUMP BETWEEN MAIN STORAGE TANKS WITH SOLENOID VALVES NC
- CONTACTS AT LEVEL 25%, 50%, 75%, 80%, 90% AND FLOW SWITCH AT VENT INCORPORATED

CAG+ Control Cabinet for Multiple Backup Power Generators

DESCRIPTION

The INPRO CAG+ Control Cabinet for Multiple Backup Power Generators is the perfect complement to INPRO transfer systems for diesel oil ATAM-GET. Its main component is a controller with multiple inputs and outputs analog / digital which can be defined for each installation.

- It will allow to safety designer ilimited manoeuver possibilities for tanks, pump systems, overflow, transfer pumps, solenoid valves, alarms, as the management is via software.
- 2nd backup relay logic design overriding the automatic controller, for safety critical points at the installation.
- Monitor levels at daily tanks.
- Touch screen 5,7" with Mod Bus or Ethernet TCP IP communication protocol.



TECHNICAL FEATURES

The CAG+ control system can manage 1, 2 or 3 filling areas depending on the configuration.

The display shows the level of daily tanks, the status of pumps, valves, etc... giving the possibility of performing either manual fillings or automatic fillings, well as different maintenance tests, essential feature to have always those backup installation ready to enter into force.

It consists of a touch screen 5.7" monochrome with Mod Bus communication capability with SCADA. Color screen, TCP-IP communication protocol are also available as additional requirement.

TECHNICAL SPECIFICATIONS

- Voltage: 230 V
- RCBO (Residual Current Breaker with Overcurrent): 40 A
- MCB (Mains Circuit Breaker): 40 A
- Pump control (depending on project)
- Maneuver (according to project)
- Tanks control (according to project)
- Solenoid (according to project)

